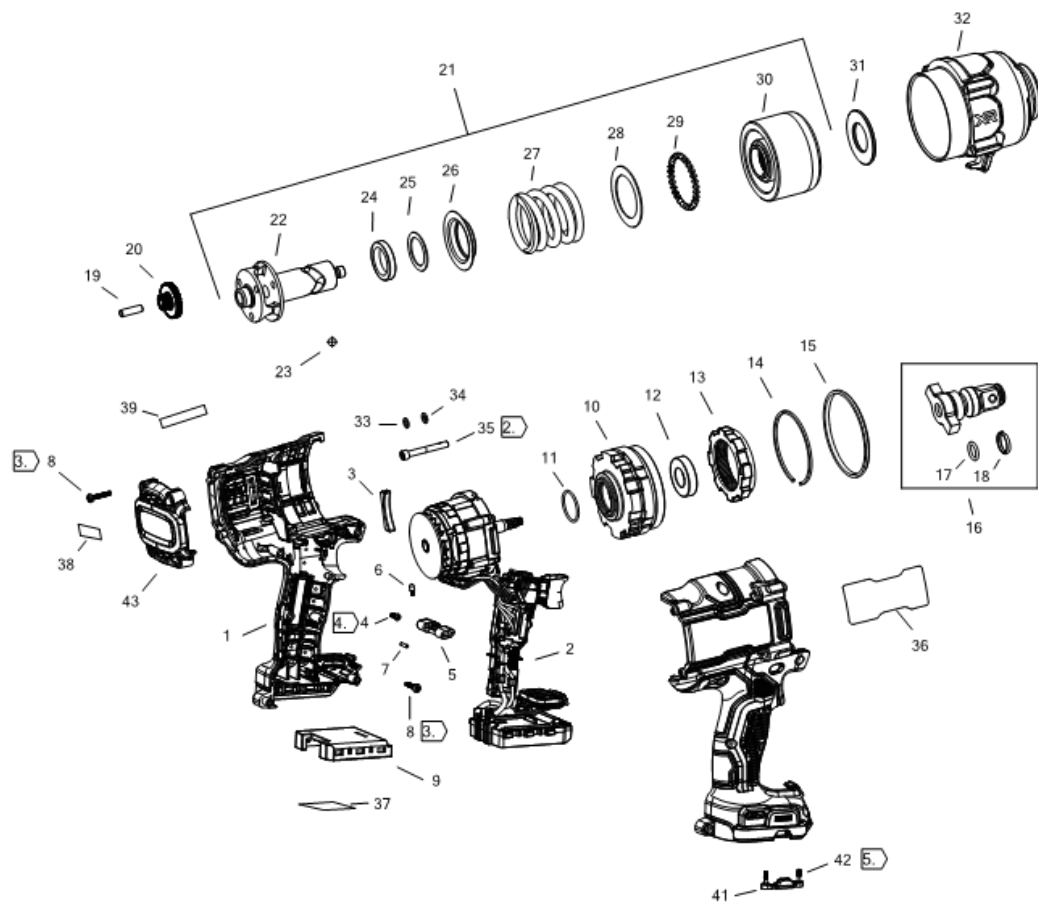
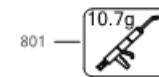
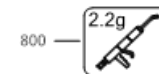


# DCF964N CORDLESS IMPACT WRENCH 1

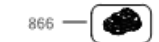


## NOTES:

1. REFER TO GREASE PLACEMENT DOCUMENT FOR GREASE PROCEDURE.
2. TORQUE TO BE  $4.5 \pm 0.3$  NM (  $39.8 \pm 2$  IN-LBS ).
3. TORQUE TO BE  $1.7 \pm 0.2$  NM (  $15 \pm 2$  IN-LBS ).
4. TORQUE TO BE  $0.9 \pm 0.2$  NM (  $8 \pm 2$  IN-LBS ).
5. TIGHTEN SCREWS TO  $0.5$  NM  $\pm 0.1$  NM. DO NOT OVERTIGHTEN.



### Reference: Refer To Part List



## Parts List DCF964N CORDLESS IMPACT WRENCH 1

Item	Part Number	Qty	Part Description	General Description	Other Info	Repair Inst	Markets
1	NA233933	1	HOUSING SA			No	XJ
2	NA379141	1	MOTOR & SWITCH SA			No	XJ
3	N864724	2	MOUNT			No	XJ
4	N042665	1	SCREW			No	XJ
5	N865539	1	ACTUATOR FWD/REV			No	XJ
6	N403227	1	DETENT			No	XJ
7	N071836	1	ROLL PIN			No	XJ
8	330019-04	11	SCREW			No	XJ
9	NA169892	1	ISOLATOR			No	XJ
10	N846042	1	GEARCASE			No	XJ
11	N411414	1	O RING			No	XJ
12	N158641	1	BEARING			No	XJ
13	N846040	1	INTERGEAR	RING GEAR		No	XJ
14	N888542	1	RING	RETAINING RING		No	XJ
15	N846523	1	RUBBER SEAL			No	XJ
16	NA341390	1	ANVIL ASSEMBLY			No	XJ
17	N399753	1	O RING	11.90 mm x 2.5 mm		No	XJ
18	N432643	1	NOSE RING			No	XJ
19	N756784	3	PIN			No	XJ
20	NA031992	3	GEAR			No	XJ
21	NA576111	1	TRANSMISSION SA			No	XJ
22	NA201540	1	CARRIER			No	XJ
23	NA091720	2	BALL STEEL			No	XJ
24	N745990	1	BUMPER			No	XJ
25	N745989	1	WASHER			No	XJ
26	N745984	1	WASHER	CENTERING WASHER		No	XJ
27	NA496106	1	SPRING			No	XJ
28	N745996	1	WASHER THRUST			No	XJ
29	000475-00	30	BALL STEEL			No	XJ
30	NA495607	1	IMPACTOR			No	XJ
31	N735844	1	WASHER			No	XJ
32	NA341393	1	NOSE SA	NOSECONE ETCHED 3-4		No	XJ

## Parts List DCF964N CORDLESS IMPACT WRENCH 1

Item	Part Number	Qty	Part Description	General Description	Other Info	Repair Inst	Markets
33	90607886	4	WASHER	NOSECONE FLAT WASHER		No	XJ
34	N783664	4	WASHER	NOSECONE SPLIT LOCK		No	XJ
35	NA407885	4	SCREW			No	XJ
36	NA410892	1	RATING LABEL			No	XJ
37	NA410866	1	LABEL		FOOT	No	XJ
38	NA352854	1	LABEL	BRUSHLESS LABEL	BRUSHLES	No	XJ
39	NA247945	1	LABEL		SD 18V	No	XJ
41	N787996	1	INSERT			No	XJ
42	N831593	2	SCREW			No	XJ
43	N893052	1	END CAP			No	XJ
800	NA360289	1	GREASE	50G		No	XJ
801	N017298	1	GREASE	G-2008 Molykote		No	XJ